



A 'Thief'

Goes on the Prowl for

'SHOW STEALERS!'

Security Sales & Integration teams with celebrity judge Jon Douglas Rainey to crown 25 products for the "Show Stealers!" program at this year's ISC East.

TV star and security expert Jon Douglas Rainey sits high above the expanse of the 2007 ISC East show floor at the Jacob Javits Convention Center in New York.



Photo by Mary Kerins Jr./Moment Catcher Photography

By the Editors of *Security Sales & Integration*

secsales@bobit.com

What do you get when a thief-turned-security-expert is set loose on the show floor at International Security Conference (ISC) East to hunt down some of the industry's most compelling devices? In the case of ex-burglar Jon Douglas Rainey, star of Discovery Channel's reality TV series "It Takes a Thief," the result is 25 security products worthy of being anointed "Show Stealers!" notoriety.

Security Sales & Integration and Reed Exhibitions, organizers of ISC East, partnered to produce the novel "Show Stealers!" program at this year's event, held Sept. 11-12 at the Jacob Javits Convention Center in New York City.

The program offered ISC East exhibitors the opportunity to bring to light their latest products among the offerings of more than 400 suppliers. Every exhibitor at the conference was entitled to be selected for one of the top 25 "Show Stealers!" trophies.

Products in several technology categories were closely evaluated and discussed by Rainey and *SSI* editors. The judging crew can-

vassed all 80,000 square feet of the exhibit floor in search of the industry's best wares from among the program's many entrants.

Rainey brought to bare his insider knowledge about security in his product evaluations; in each of the "It Takes a Thief" episodes, he stages a break-in then reveals to the occupants that he's done it and offers tips to improve the premise's security.

"This was no simple assignment," says Rainey, who attracted copious attention on the show floor from fans of the reality series. "So many of the manufacturers impressed me with the security equipment they have engineered. Having to narrow the list down to 25 was not an easy job."

The "Show Stealers!" showcase that unfolds on the subsequent pages is certainly not intended to be a comprehensive list. Indeed, many products reviewed by Rainey and *SSI* were notable in their own right. What follows, however, are 25 products that are innovatively designed for securing homes, places of business and our public spaces.

Security Market First: 5-Megapixel 360° Camera Has Video Analytics

Naperville, Ill.-based **Sentry 360 Security** bills its FullSight IP™ ware as the industry's first compact 5-megapixel 360° network camera with onboard video analytics. Outfitted with a wide-angle lens, monitoring personnel can pan/tilt/zoom (p/t/z) with 2,592 X 1,944 active pixels.

Among its advantages, video analytics give the Full-Sight IP the ability to automatically track an object of interest, while a single camera can replace up to eight fixed limited-view cameras. It can be used standalone via a Web browser or integrated into a video surveillance system via network video recording software, providing p/t/z capability in full resolution when viewing recorded video.

Need **FREEInfo?** Use #21300
(800) 719-6906, ext. 21300
www.securitysales.com/FREEInfo/21300



4-Channel DVR Features Integrated LCD Monitor, MJPEG Compression

CoviSec™, based in Ft. Walton, Fla., offers the ALD-400LCD, a four-channel DVR with an integrated 15-inch TFT LCD monitor. The unit features an RJ-11e connection and MJPEG compression. (Other units in the product series offer JPEG2000 compression in four and eight channels.)



Along with advanced motion detection, the ALD-400LCD is equipped with USB backup, Internet connectivity and operation via remote controller or mouse. The company says the product series is well-suited for residential applications thanks to its stylish design and is popular in small office locations where space comes at a premium. The units can be mounted on a wall or desktop and come with a wall-mounting kit.

Need **FREEInfo?** Use #21303
(800) 719-6906, ext. 21303
www.securitysales.com/FREEInfo/21303

Security System Is Highlighted by Intelligent Exit/Entry Technology



Amityville, N.Y.-based **NAPCO Security Group** says its Freedom™ F64 code-free security system helps eliminate false alarms, while maximizing account retention. The F64 Code-Free is the market's first solution that turns on and off by using a standard deadbolt with a patented lock sensing tab inserted into the lock hole. Deadbolt and door open status are wirelessly transmitted to the lock receiver on the multifunction keypad.

The Freedom touchpad controls up to two doors and is outfitted with a four-zone expansion module. Other features include programmable panic, ambush and chime functions. Freedom F64 is expandable up to 64 zones and supports all Gemini wireless transmitters and standard security devices.

Need **FREEInfo?** Use #21301
(800) 719-6906, ext. 21301
www.securitysales.com/FREEInfo/21301

Compact DVR Benefits from 'Active Content Compression' Technology

Boca Raton, Fla.-based **American Dynamics™**, a video technology brand of Tyco Int'l, says its compact Intellex® Ultra records twice as many channels of full motion video at full resolution as any DVR in its class. The unit supports 640 X 480 pixels (4 CIF) at 240 ips and 640 X 240 pixels (2 CIF) at 480 ips.

American Dynamics says its Active Content Compression (ACC) technology results in high quality video files up to nine times smaller than MPEG-4 or MJPEG, allowing users to store more using less hard drive space. A separate solid-state system drive maintains viability even in the unlikely event of hard drive failure. Front-accessible swappable drives plus RAID-5 options reduce maintenance costs and further protect against data loss.

Need **FREEInfo?** Use #21302
(800) 719-6906, ext. 21302
www.securitysales.com/FREEInfo/21302



Web Services API Expands Access Control Integration Options

The **Brivo XML-RPC** application programming interface (API) works with the Bethesda, Md., company's flagship ACS WebService and soon for ACS OnSite as well. The XML interface enables the integration of diverse computer systems, including identity management, single sign-on, HR systems, policy management and Web sites.



The openly available interface allows developers to integrate with any of Brivo's product lines. The API gives flexibility to systems integrators, who can pick and choose among products to create optimal configurations for their customers.

Need **FREEInfo?** Use #21304
(800) 719-6906, ext. 21304
www.securitysales.com/FREEInfo/21304



Indoor/Outdoor Camera a Good Fit in Low Light; Eliminates Noise

Samsung360° of Melville, N.Y., says its SIR-4150 IR LED camera yields high quality video surveillance even in total darkness, thanks to infrared LEDs that provide up to 100 feet of illumination. In

settings with ample light, the SIR-4150 functions as a high resolution (520 TV lines) color camera. As light diminishes, an IR cut removal filter changes the camera to black-and-white with a resolution of 570 TV lines.

The indoor/outdoor camera features a 3.8-9.5mm varifocal lens and carries an IP65 rating for resistance to weather. Samsung Super Noise Reduction (SSNR), a proprietary technology, provides clear pictures in low light by eliminating noise.

Need **FREEInfo?** Use #21307
 (800) 719-6906, ext. 21307
www.securitysales.com/FREEInfo/21307

Wireless Management System Tracks Fleet Vehicle Efficiency

The Networkfleet® 3500 product line by San Diego-based **Networkcar** allows fleet managers to access real-time productivity and efficiency information on light, medium and heavy vehicles. The product integrates a wireless communication system, a microprocessor-controlled interface to the vehicle's diagnostic bus, and a GPS receiver into a single enclosure the size of a PDA.



Users log onto a secure Web page to view and manage information for each vehicle. Available data includes current location, fuel consumption, mileage, speed, emissions and idle time. Customers also receive instant E-mail notifications when a diagnostic trouble code is present in a vehicle or when a vehicle is due for scheduled maintenance.

Need **FREEInfo?** Use #21305
 (800) 719-6906, ext. 21305
www.securitysales.com/FREEInfo/21305

Jon Douglas Rainey listens intently as Dean Mason (right), marketing product manager for Honeywell Security, demonstrates the wireless functionality of the company's Total Connect remote services.



Photo by Marly Kerrins, Jr./Moment Catcher Photography

Streamlined DVR Engineered for the Small Business Owner

Irvine, Calif.-based **Mitsubishi Digital Electronics America's** DX-TL4U, a four-input DVR, is engineered specifically with small retail environments in mind. Utilizing Mitsubishi's advanced proprietary compression, the DX-TL4U is available in 80GB, 250GB and 500GB models that are well-suited for users seeking to upgrade from analog to digital.

Easily controlled using a front-button interface or a wireless remote control, the DX-TL4U features one of the lowest learning curves of its class and, at less than 2 inches tall, is one of the thinnest, space-saving DVRs available. Its user-friendly diagnostics allow users to quickly troubleshoot and resolve system performance issues.

Need **FREEInfo?** Use #21306
 (800) 719-6906, ext. 21306
www.securitysales.com/FREEInfo/21306



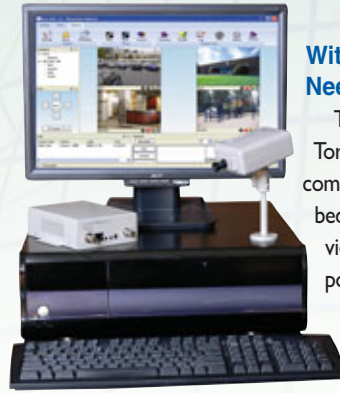
Heavy-Duty Electric Strikes Are Certified Burglary Resistant

The fire-labeled UL 10C FI Series electric strikes by **RCI** of Cambridge, Ontario, Canada, are certified burglary resistant. A heavy-duty solid cast stainless-steel "saddle-mount" housing design enhances strength and durability by enclosing the strike insert on three sides and protecting it from manipulation and attack.

Once installed, the tamper-resistant Pry-Guard concealed behind the door frame prevents manipulation by tool attack. The housing cannot be forced or broken off when mounted in a hollow metal, aluminum or wood door frame. The FI electric strikes are available in 11-16VAC, 12VAC/DC and 24VAC/DC; and ANSI (1 1/4 inch X 4 1/4 inch) or 9 inch faceplates.

Need **FREEInfo?** Use #21308
 (800) 719-6906, ext. 21308
www.securitysales.com/FREEInfo/21308





With Video Surveillance Solution No Need to Run New Cabling

The PL-VUE video surveillance application by Toronto-based **VisualGate Systems** provides a commercial-grade solution utilizing Powerline-embedded IP technology. The system transmits digital video over existing AC wiring, offering increased portability, scalability and signal protection. The network DVR supports up to 16 cameras at 30 fps per camera, while the video monitoring, recording and management software allows for advanced search and retrieval, smart motion detection, multilevel access and remote viewing over the Internet.

The digital video encoder has both Powerline and Ethernet capabilities, allowing hybrid solutions where existing Ethernet networks are already in place but where there is a need to expand capacity.

Need **FREEInfo?** Use #21311
 (800) 719-6906, ext. 21311
www.securitysales.com/FREEInfo/21311

Powerful Enhancements Added to IP-Based Video Matrix Switch

On-Net Surveillance Systems Inc. (OnSSI)

recently unveiled its new version of NetSwitcher, an IP-based virtual video matrix switch. NetSwitcher 1.5 offers improved integration with video content analytics systems, distributed event handling and enhanced presentation of video.



A user-friendly interface requires minimal training; there is no need for the operator to remember special key functions, camera codes or camera location.

Through integration with video content analytics, access control and other physical security systems, NetSwitcher 1.5 manages and logs all events corresponding to conditional rules for motion and nonmotion behaviors, enabling critical video to be pushed to screens for immediate action and response.

Need **FREEInfo?** Use #21309
 (800) 719-6906, ext. 21309
www.securitysales.com/FREEInfo/21309

Jon Douglas Rainey engages in conversation at the Extreme CCTV booth about the versatility of the company's ruggedized **Moondance**® pan/tilt/zoom camera.



Photo by Marty Kerris Jr./Moment Catcher Photography

Wireless Alarm System Utilizes GPS to Protect Mobile Assets

DeWalt is a GPS-based wireless alarm system designed to protect high value mobile assets. The device, about the size of a deck of cards, is mounted in a hidden area on any mobile asset. Multiple sensors are built in, such as vibration, temperature, door contact and tamper.



An internal siren can be activated in an alarm event as a deterrent or remain silent for stealth notification and locating.

Users can be notified via text message, E-mail, automated phone call or elect to have a dealer send the message to a central monitoring station through Contact ID or SIA.

Need **FREEInfo?** Use #21310
 (800) 719-6906, ext. 21310
www.securitysales.com/FREEInfo/21310

Small Covert Surveillance Tool Comes With Built-In Camera, DVR

The StealthCam Recluse, a covert video surveillance tool by Nashville, Tenn.-based **KJB Security Products**, is an all-inclusive recording device housed in a nondescript enclosure. Inside the small black box are a DVR and a motion-activated camera. The recording system uses a SD card for memory; no software is needed. Use the unit itself for playback or pop the SD card into a PC to view the video on a media player.

Recluse specifications include: unit size, 3¼ X 5½ X 1 inches; video resolution, 320 X 240; JPEG resolution, 640 X 480; frame rate, 30 fps (real-time video); RCA composite AV input and output; and built-in rechargeable battery and A/C adaptor.

Need **FREEInfo?** Use #21312
 (800) 719-6906, ext. 21312
www.securitysales.com/FREEInfo/21312





Ruggedized P/T/Z Camera Built to Withstand Extreme Conditions

Moondance® by **Extreme CCTV** of Burnaby, British Columbia, Canada, is engineered to eliminate all functional shortcomings of conventional pan/tilt/zoom (p/t/z) cameras. Billed as the most rugged and versatile p/t/z camera on the market, Moondance delivers 360° viewing, as well as video from above and below the camera. The camera's advanced optics include 432x total zoom and LXR mechanical filter technology. Its flat glass window with external wiper and internal heater eliminates image distortions.

Featuring a metal powerdome design and IP68 environmental rating, Moondance provides high performance in extreme conditions. The product family includes aluminum, ballistic, explosion-protected and thermal models.

Need **FREEInfo?** Use #21315
(800) 719-6906, ext. 21315
www.securitysales.com/FREEInfo/21315



Indoor Network Camera Includes 1-Click P/T/Z Functionality

Axis Communications of Chelmsford, Mass., says its 212 PTZ network camera is ideal for monitoring indoor areas of less than 500 square feet. The camera incorporates

digital pan/tilt/zoom (p/t/z) technology that provides instant, one-click p/t/z functionality and automatic patrolling without wear and tear on moving parts. A 3-megapixel sensor and wide-angle lens provide VGA resolution.

Built-in Power over Ethernet (PoE) support implies reduced cabling and installation costs as well as consolidated power for higher reliability. Simultaneous motion JPEG and MPEG-4 video streams, a comprehensive set of network security features, and two-way audio support increase the surveillance and monitoring options.

Need **FREEInfo?** Use #21313
(800) 719-6906, ext. 21313
www.securitysales.com/FREEInfo/21313



After spotting a security fence display on the exhibition floor, Jon Douglas Rainey makes a lighthearted attempt to show off his nimble ability to breach perimeter protection.

Photo by Marty Kerins Jr./Moment Catcher Photography



Compact Dome Cameras Offer Up to 960 Lines of Resolution

Mobotix of New York City recently unveiled its D22 camera series, a line of compact dome cameras with up to 960 lines of resolution, integrated video management software and long-term storage management. At 1,280 X 960 pixels, Mobotix says the resolution of the D22's recorded image is about 12 times higher than in the conventional CIF format still used in most surveillance systems.

The D22-Basic was designed specifically for use in indoor areas; the camera includes a 90° wide-angle lens and is powered using Power over Ethernet (PoE). The weatherproof D22-IT and D22-Secure models are equipped with additional software functions.

Need **FREEInfo?** Use #21314
(800) 719-6906, ext. 21314
www.securitysales.com/FREEInfo/21314

Remotely Monitor, Control Home Security Systems

HAI of New Orleans offers the ability to remotely monitor and control home lighting, intrusion and video systems, thermostats and more with Snap-Link. The software is stored on a USB drive and works with any Windows™-based computer connected to the Internet.

Snap-Link is compatible with HAI's Lumina and Omni home control systems. With an Omni system, Snap-Link users can arm/disarm an alarm, view a security log or bypass/restore individual zones. With a Lumina system tied into a DSC security system, the integration allows the arming/disarming of the DSC system via the Internet. Users can also receive event alerts via E-mail, cell phone or pager.

Need **FREEInfo?** Use #21316
(800) 719-6906, ext. 21316
www.securitysales.com/FREEInfo/21316



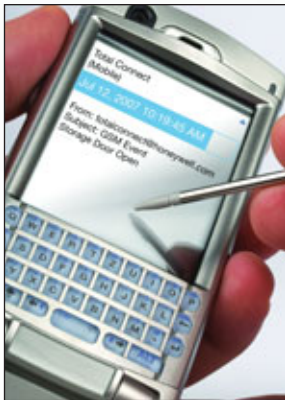


Wireless Video Security System Combines Intrusion Detection

Videofied by **RSIalarm Inc.** of White Bear Lake, Minn., combines intrusion detection and video in a battery-powered wireless unit using the GPRS cell network. A night vision camera integrated with a motion sensor captures 10 seconds of video and sends the alarm and MPEG clip to a monitoring station. The station operator can E-mail the video or send it to a cell phone.

The system can be equipped with up to 24 cameras and peripherals, including exterior sirens, smoke detectors, door/window contacts and card readers. Videofied is available either as a complete stand-alone solution (VIA-Pro) or as an upgrade (VIA-VU) to existing installed intrusion alarms.

Need **FREEInfo?** Use #21319
 (800) 719-6906, ext. 21319
www.securitysales.com/FREEInfo/21319



Communication Services Offer Enhanced Remote Access

Total Connect by Melville, N.Y.-based **Honeywell Security** lets consumers utilize the Internet, PDAs, cell phones and other devices to stay connected to their homes and businesses.

Total Connect, a suite of basic and enhanced services, allows dealers to offer whatever service combinations they choose, thereby increasing the opportunity for recurring monthly revenue (RMR). Basic services include Short Message Service (SMS) and Web-based remote system control and E-mail notification of noncritical events, including video and picture notification. Once logged onto a secure Web site, consumers can control their security systems and perform other tasks via a virtual keypad using any Web browser on a PC, PDA or cell phone.

Once logged onto a secure Web site, consumers can control their security systems and perform other tasks via a virtual keypad using any Web browser on a PC, PDA or cell phone.

Need **FREEInfo?** Use #21317
 (800) 719-6906, ext. 21317
www.securitysales.com/FREEInfo/21317



Photo by Mary Kerins Jr./Moment Catcher Photography

Jon Douglas Rainey gains insight about Panasonic's WV-NW484S network dome camera from **Keith Ridings** (left), national sales manager, and **Jim Destefano**, director of sales for the Security Systems and Vision Systems Groups.

1/3-Inch Format Varifocal Lenses Designed for Megapixel Sensors

Commack, N.Y.-based **Tamron** has introduced a new series of 1/3-inch format varifocal lenses (2.4-6mm F/1.2, 3.0-8mm F/1.0 and 5-50mm F/1.4) designed for security cameras equipped with megapixel count image sensors.



The lenses deliver high resolution and high contrast images that are uniformly sharp from the center to the periphery. In particular, resolution in the image corner is almost double when compared to that of conventional lenses, according to the company. The lenses use aspherical elements and low dispersion optical glass material to minimize various aberrations and ensure high optical quality. Multicoating on the lens surfaces minimize ghosting and flare in backlit situations.

Need **FREEInfo?** Use #21318
 (800) 719-6906, ext. 21318
www.securitysales.com/FREEInfo/21318

Networked Door Solution Designed to Simplify Installation, Service

ASSA ABLOY's Hi-O™ (Highly Intelligent Opening) connects electronic door components together over a controller area network (CAN), allowing the parts to communicate and be monitored. Hi-O enables devices to exchange and share encrypted information. Every device (the lock, exit device, electric strike, proximity reader, door operator, push button, etc.) is connected through a four-wire cable.



With Hi-O, intelligence is built into each device instead of one centralized logic unit, creating a plug-and-play system. Among its advantages, expansion of the Hi-O door system is simplified because all new devices are automatically identified on the network.

Need **FREEInfo?** Use #21320
 (800) 719-6906, ext. 21320
www.securitysales.com/FREEInfo/21320



Vandal-Proof Dome Camera Designed for Network Applications

The WV-NW484S i-Pro vandal-proof network dome camera by Secaucus, N.J.-based **Panasonic Security Systems** offers Super Dynamic III (SDIII) technology, providing 128x dynamic range to capture high quality images and provide accurate image reproduction even in harsh lighting conditions. Anti-shock auto back focus (ABF) ensures perfect focus when switching from color to black-and-white and automatic day/night switching for 24-hour monitoring.

Other features of the WV-NW484S: Power over Ethernet (PoE) capability; an advanced dehumidification internal device; advanced DSP delivers extensive range of advanced features, including digital motion detection; 540 lines of horizontal resolution in color mode and 570 lines in black-and-white mode.

Need **FREEInfo?** Use #21322
 (800) 719-6906, ext. 21322
www.securitysales.com/FREEInfo/21322



In-Wall Pulling Tool Uses Magnets to Guide Wire, Leader

BES Manufacturing of Deposit, N.Y., recently released the Wire Python, an in-wall wire-pulling tool. The unit consists of a handheld paddle with magnet, and a flexible leader with magnet. The flexible leader is attached to a wire or pull-string and inserted into a wall cavity. The hand unit is then used on the outside of the wall to attract the leader.

Once contact is made, an installer can drag the hand unit down the wall surface to an opening through which the wire and leader emerge. The paddle contains wheels to avoid marking the wall surface. The Wire Python also works well in fiberglass insulation.

Need **FREEInfo?** Use #21323
 (800) 719-6906, ext. 21323
www.securitysales.com/FREEInfo/21323

Wireless Solution Offers Home Monitoring, Control Functionality

The Home Security 2.0 solution by Palo Alto, Calif.-based **iControl** delivers remote monitoring and control functionality to traditional monitored home protection. Utilizing a tri-mode security network (broadband, cellular/GSM and POTS access), users can stay connected to their homes, families and properties when away.

Customers can see live video and pictures of their homes, receive E-mail and text message notifications of events, and control lighting, thermostats and more via Web portals or mobile devices.

The new software complements existing GE Security equipment and will be offered through Monitronics' dealer network.

Need **FREEInfo?** Use #21321
 (800) 719-6906, ext. 21321
www.securitysales.com/FREEInfo/21321



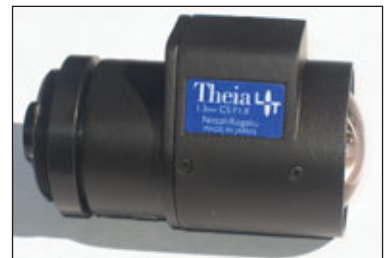
Jon Douglas Rainey made time to sign autographs and greet visitors at Security Sales & Integration's exhibit booth, including two staff members of the New York Burglar and Fire Alarm Association (NYBFAA).

Photo by Marty Kerins Jr./Moment Catcher Photography

Patent-Pending Technology Boosts Megapixel Camera Resolution

The SY125 Series of CCTV lenses by Wilsonville, Ore.-based **Theia Technologies** utilizes the company's patent-pending Linear Optical Technology, which enables users to take advantage of high resolution megapixel cameras.

Linear Optical Technology allows the design of ultra-wide-angle lenses with fields of view of 125° while maintaining less than 3-percent barrel distortion. Distortion correction is achieved optically in the lens; no dewarping software is required. The SY125 Series of lenses are compatible with 1/8-inch security cameras. The lenses are designed for up to 3-megapixel cameras and are available with auto or manual iris, and with CS or C mount.



Need **FREEInfo?** Use #21324
 (800) 719-6906, ext. 21324
www.securitysales.com/FREEInfo/21324